

## CHECKLIST ENVIRONMENTAL ASSESSMENT

<b>Project Name:</b>	2019 Land Banking – Conrad Unit – CLO – Meissner Ranches Inc.
<b>Proposed Implementation Date:</b>	2019
<b>Proponent:</b>	This tract was nominated by the lessee, Meissner Ranches Inc., and brought forward now by DNRC.
<b>Location:</b>	SE4NE4, Section 15, T35N, R5E, 40.00 acres, Liberty County, (CS) Total (CS) Acres: 40.00
<b>County:</b>	Liberty County
<b>Trust:</b>	Commons Schools (CS)

### I. TYPE AND PURPOSE OF ACTION

Offered for Sale at Public Auction are 40.00 acres of state land currently held in trust for the benefit Common Schools. Revenue from the sale would be deposited in a special account, with monies from other sales around the State, to purchase replacement lands meeting acquisition criteria related to legal access, productivity, potential income, and proximity to existing state ownership which would then be held in trust for the benefit of the same beneficiary Trust in relative proportion. The 2003 State Legislature passed statutes (77-2-361 through 367 MCA) authorizing the Department of Natural Resources and Conservation (DNRC) to sell State School Trust Lands and utilize those funds to purchase replacement lands for the school trust through a process called Land Banking. The intent of the program is for the state to dispose of scattered tracts of land that generally do not have legal access, generate substantially less income for the trust than their relative value, or are difficult for the DNRC to manage. The funds generated from sales are then used to purchase property that is blocked or contiguous to state land, has legal access, has potential for increased Trust revenue and consequently is more efficient to manage. In 2005 the Department began accepting nominations from lessees and DNRC personnel for state tracts to be considered for sale under the program. Nominations were evaluated and the State Board of Land Commissioners (Board) prioritized for sale. To date the DNRC and the Board has sold 80,165 acres and purchased 98,228 acres.

Two maps are attached to this EA checklist: 1. Labeled "Appendix A" - Land Banking Priorities- Liberty County is a general map of all state land within that area of the county (blue) and the parcels of land being considered for sale under land banking (dark blue). 2. Labeled "Appendix B" is satellite imagery maps that indicate the tracts being considered for sale in the EA checklist.

### II. PROJECT DEVELOPMENT

#### 1. PUBLIC INVOLVEMENT, AGENCIES, GROUPS OR INDIVIDUALS CONTACTED:

*Provide a brief chronology of the scoping and ongoing involvement for this project.*

- Legal notices were published in the in the Liberty County Times on 03/20/2019 and 03/27/2019.
- Direct mailings were made to lessees, adjacent land owners, County Commissioners, State Legislators (from the involved Districts and who were associated with the legislation), and a host of organizations and individuals who had expressed previous interest in this process. A full listing of contacts is attached as Appendix C.

---

## 2. OTHER GOVERNMENTAL AGENCIES WITH JURISDICTION, LIST OF PERMITS NEEDED:

No other governmental agencies have jurisdiction over this proposal.

---

## 3. ALTERNATIVES CONSIDERED:

Alternative A (No Action) – Under this alternative, the State retains the existing land ownership pattern and would not sell the 40.00 acres of state land currently held in trust for the benefit of Common Schools.

Alternative B (the Proposed action) – Under this alternative, the Department would request and recommend approval by the Land Board to sell the 40.00 acres of state land currently held in trust for the benefit of Common Schools. If approved by the Board, the sale would be at public auction, subject to the requirements found in Title 77, Chapter 2, Part 3 of the Montana Codes Annotated. The income from the sale would be pooled with other land sale receipts from across the State to fund the purchase of other state land, easements, or improvements for the beneficiaries of the respective trusts. *(The State would then review available lands for sale which would generally have access and an increased potential for income. A separate public scoping and review would be conducted when a potentially suitable parcel was found. It is not possible for this analysis to make any direct parcel to parcel comparisons.)*

---

### III. IMPACTS ON THE PHYSICAL ENVIRONMENT

- *RESOURCES potentially impacted are listed on the form, followed by common issues that would be considered.*
  - *Explain POTENTIAL IMPACTS AND MITIGATIONS following each resource heading.*
  - *Enter "NONE" If no impacts are identified or the resource is not present.*
- 

## 4. GEOLOGY AND SOIL QUALITY, STABILITY AND MOISTURE:

*Consider the presence of fragile, compactable or unstable soils. Identify unusual geologic features. Specify any special reclamation considerations. Identify any cumulative impacts to soils.*

The information listed below provides a general outline of the soil types on the tracts proposed for sale. USDA – NRCS soil survey indicated Land Capability Classification for Section 15, T35N, R5E is 3E-28%, 4E-70% and 6E-2% soils. The 3E, 4E and 6E soils consisting of 40.00 acres are currently utilized for grazing. The 6E class of soils is generally not suitable for small grain crop production. This tract would not meet current DNRC breaking criteria as the soil types are comingled and would not support small grain production. *("If properly managed, soils in classes 1, 2, 3, 4 are suitable for the mechanized production of commonly grown field crops and for pasture and woodland. The degree of the soil limitations affecting the production of cultivated crops increases progressively from class 1 to class 5. The limitations can affect levels of production and the risk of permanent soil deterioration caused by erosion and other factors. Soils in classes 5, 6, 7 are generally not suitable for mechanized productions without special management. Capability subclasses indicate the dominant limitations in the class, E, shows that the main hazard is the risk of erosion unless a close growing plant cover is maintained. Capability subclasses indicate the dominant limitations in the class "S" shows that the soil is limited mainly because it is shallow, droughty, or stony. (From USDA-NRCS Soil Survey).*

Topography is rolling to steep slopes composed of native rangeland. Soils are stable due to permanent vegetation cover being maintained upon the tract. This tract is surrounded by native rangeland contained in large pastures used for grazing. It is unlikely this tract would be broke for agricultural production in the future as it has been historically used as grazing land. The proposal does not involve any on the ground disturbance, so there are no soil effect differences between the alternatives. It is expected that this land will be used for livestock grazing in the future.

The State owns certain minerals under this parcel and would retain ownership of these mineral rights if the tract is sold.

---

## **5. WATER QUALITY, QUANTITY AND DISTRIBUTION:**

*Identify important surface or groundwater resources. Consider the potential for violation of ambient water quality standards, drinking water maximum contaminant levels, or degradation of water quality. Identify cumulative effects to water resources.*

There are no water rights associated with this tract of state land. Tootsie Creek flows very seasonally through the tract, but no changes in use of the seasonal waters are expected in either alternative. Other water quality and/or quantity issue will not be impacted by the proposed action as no change in land use is expected.

---

## **6. AIR QUALITY:**

*What pollutants or particulate would be produced? Identify air quality regulations or zones (e.g. Class I air shed) the project would influence. Identify cumulative effects to air quality.*

The proposal does not include any on-the-ground activities, or changes to activities. No effects to air quality would occur.

---

## **7. VEGETATION COVER, QUANTITY AND QUALITY:**

*What changes would the action cause to vegetative communities? Consider rare plants or cover types that would be affected. Identify cumulative effects to vegetation.*

The acres proposed for sale consist of 40.00 acres of grazing land (native rangeland). Grazing land is typical of the Northern Mixed Grassed Prairie. Range sites are dominated by silty and overflow sites. Species composition is dominated by grasses which include Western wheatgrass, Green needle grass, Needle and thread grass, Blue grama, Sandberg bluegrass, and Prairie junegrass. Sub-dominate species include various forbs and shrubs. Noxious weeds have not been identified according to previous inspections. Current range condition is fair-excellent on Section 15, T35N, R5E with an estimated carrying capacity or stocking rate assessed at 0.300 AUMs per acre.

Vegetation may be affected by numerous land management activities including livestock grazing, development, wildlife management, or other agricultural use. It is unknown what land use activities may be associated with a change in ownership; however, the vegetation on this tract is typical of land throughout the vicinity and there are no known rare, unique cover types or vegetation on this tract. It is expected that this land will be used for grazing livestock in the future. The nominating lessee has indicated that if they purchased this tract, the land use would remain as grazing land. The proposal does not include any on-the-ground activities, or changes to activities and therefore we do not expect direct or cumulative effects would occur to vegetation because of the proposal.

A review of Natural Heritage data through the NRIS was conducted for T35N, R5E: There were zero species of concern and zero potential species of concern noted on the NRIS survey.

---

## **8. TERRESTRIAL, AVIAN AND AQUATIC LIFE AND HABITATS:**

*Consider substantial habitat values and use of the area by wildlife, birds or fish. Identify cumulative effects to fish and wildlife.*

The area is not considered critical wildlife habitat. However, this tract provides habitat for a variety of big game species (mule deer, whitetail deer, and pronghorn antelope), predators (coyote, fox, and badger), upland game birds (sharp tail grouse and Hungarian partridge), other non-game mammals, raptors and various songbirds. The proposal does not include any land use change which would yield changes to the wildlife habitat. The proposed action will not impact wildlife forage, cover, or traveling corridors. Nor will this action change the juxtaposition of wildlife forage, water, or hiding and thermal cover.

The nominating lessee have indicated that if they purchased this tract, the land use would remain as grazing lands. There are no unique or critical wildlife habitats associated with the state tract and we do not expect direct or cumulative wildlife impacts would occur because of implementing the proposal. The proposed action will not have long-term negative effects on existing wildlife species and/or wildlife habitat because of its relatively small scale.

---

**9. UNIQUE, ENDANGERED, FRAGILE OR LIMITED ENVIRONMENTAL RESOURCES:**

*Consider any federally listed threatened or endangered species or habitat identified in the project area. Determine effects to wetlands. Consider Sensitive Species or Species of special concern. Identify cumulative effects to these species and their habitat.*

A review of Natural Heritage data through the NRIS was conducted, as well as tract specific requests for wildlife concerns were made to the Montana FWP. Montana FWP did provide site specific comments regarding wildlife.

A review of Natural Heritage data through the NRIS was conducted for T35N, R5E. There were four animal species of concern, zero potential species of concern, and zero special status species noted on the NRIS survey: Birds-Veery, Loggerhead Shrike, and McCown's Longspur. Butterflies-Gray Comma. This tract of grazing land does not contain many, if any of these species. Threatened or endangered species, sensitive habitat types, or other species of special concern or potential species of concern will not be impacted given the fact no management changes are expected from the sale of the tract. Therefore, no direct, indirect, or cumulative effects are expected to these species of concern.

---

**10. HISTORICAL AND ARCHAEOLOGICAL SITES:**

*Identify and determine effects to historical, archaeological or paleontological resources.*

The DNRC conducted a Class III cultural and paleontological resources inventory of the SENE1/4 Section 15, T35N R5E. A historic irrigation ditch and a precontact age (pre 1805 A.D.) stone circle/cairn site were documented. The irrigation ditch is privately owned and outside of DNRC jurisdiction. Significance and integrity of the stone circle/cairn site has not been determined, but a change in land use is unlikely if the resource leaves state ownership. Therefore, the DNRC recommends the sale of the state parcel will result in *No Effect to Antiquities* as defined under the Montana State Antiquities Act. A formal report of findings will be prepared and filed with the DNRC and the Montana State Historic Preservation Officer.

---

**11. AESTHETICS:**

*Determine if the project is located on a prominent topographic feature, or may be visible from populated or scenic areas. What level of noise, light or visual change would be produced? Identify cumulative effects to aesthetics.*

This tract is in a rural agricultural area. The state land does not provide any unique scenic qualities not also provided on adjacent private lands. The proposal does not include any on-the-ground activities, so there would be no change to the aesthetics in either alternative.

---

**12. DEMANDS ON ENVIRONMENTAL RESOURCES OF LAND, WATER, AIR OR ENERGY:**

*Determine the amount of limited resources the project would require. Identify other activities nearby that the project would affect. Identify cumulative effects to environmental resources.*

There are 5,215,220.61 acres of Trust land in Montana. There are 4,645,138.42 acres of Common Schools surface ownership in Montana, (TLMS).

There are approximately 85,356.57 acres of Common Schools Trust in Liberty County. There are approximately 305,975.08 acres of Common School Trust in the Conrad Unit, (TLMS). This proposal includes 40.00 acres in Liberty County, a small percentage of the state land within this County.

The potential transfer of ownership will not have any impact or demands on environmental resources of land, water, air, or energy.

---

**13. OTHER ENVIRONMENTAL DOCUMENTS PERTINENT TO THE AREA:**

*List other studies, plans or projects on this tract. Determine cumulative impacts likely to occur as a result of current private, state or federal actions in the analysis area, and from future proposed state actions in the analysis area that are under MEPA review (scoped) or permitting review by any state agency.*

There are no other projects or plans being considered on the tract listed on this EA.

#### IV. IMPACTS ON THE HUMAN POPULATION

- *RESOURCES potentially impacted are listed on the form, followed by common issues that would be considered.*
- *Explain POTENTIAL IMPACTS AND MITIGATIONS following each resource heading.*
- *Enter "NONE" if no impacts are identified or the resource is not present.*

##### 14. HUMAN HEALTH AND SAFETY:

*Identify any health and safety risks posed by the project.*

No impacts to human health and safety would occur because of the proposal.

##### 15. INDUSTRIAL, COMMERCIAL AND AGRICULTURE ACTIVITIES AND PRODUCTION:

*Identify how the project would add to or alter these activities.*

The tracts included in this proposal is leased by Meissner Ranches Inc. for grazing. Sale of the land to Meissner Ranches Inc. would add to their ranching operations. Below is a table that indicates the State rated carrying capacity of the tracts being considered for sale.

Legal	Acres	Lease #	State rated carrying capacity
Section 15, T35N, R5E	40.00	7827	12 AUM'S
Total	40.00		12 AUMs

This proposal does not include any specific changes to the agricultural activities. The nominating lessees indicated that grazing would continue unchanged if they purchased this land.

No direct or cumulative impacts are anticipated because of the proposal.

##### 16. QUANTITY AND DISTRIBUTION OF EMPLOYMENT:

*Estimate the number of jobs the project would create, move or eliminate. Identify cumulative effects to the employment market.*

The proposal would have no affect on quantity and distribution of employment.

##### 17. LOCAL AND STATE TAX BASE AND TAX REVENUES:

*Estimate tax revenue the project would create or eliminate. Identify cumulative effects to taxes and revenue.*

State School Trust Lands are currently exempt from property tax. If State Trust Lands represent 6% or greater of the total acres within a county, a payment in lieu of taxes (PLT) is made to the counties to mitigate for the State Trust Land tax exempt status.

Counties will not realize an adjustment in the PLT payment because of an increase or decrease in State Trust Land acreage. If the parcel in this proposal was sold and use continued as grazing land, Liberty County would receive an estimated \$26.00 in additional property tax revenues.

##### 18. DEMAND FOR GOVERNMENT SERVICES:

*Estimate increases in traffic and changes to traffic patterns. What changes would be needed to fire protection, police, schools, etc.? Identify cumulative effects of this and other projects on government services*

Being remote grazing and agricultural lands, no traffic changes would be anticipated. All state and private land are under the County Coop wildfire protection program. The proposed sale will not change fire protections in the area.

##### 19. LOCALLY ADOPTED ENVIRONMENTAL PLANS AND GOALS:

*List State, County, City, USFS, BLM, Tribal, and other zoning or management plans, and identify how they would affect this project.*

This tract is surrounded by private land. There are no zoning or other agency management plans affecting this land.

---

**20. ACCESS TO AND QUALITY OF RECREATIONAL AND WILDERNESS ACTIVITIES:**

*Identify any wilderness or recreational areas nearby or access routes through this tract. Determine the effects of the project on recreational potential within the tract. Identify cumulative effects to recreational and wilderness activities.*

The proposed tract is not legally accessible which limits the current and future recreational activities. The area contains no wilderness areas. Selling the parcel will not change the access or management of remaining state land in the area. The sale of this tract is not expected to have any cumulative effects on recreational or wilderness activities and collectively offers very little recreational value.

---

**21. DENSITY AND DISTRIBUTION OF POPULATION AND HOUSING:**

*Estimate population changes and additional housing the project would require. Identify cumulative effects to population and housing*

The proposal does not include any changes to housing or developments. The nominating lessee has indicated that the land would continue as grazing, if they purchase them at auction. No effects are anticipated.

---

**22. SOCIAL STRUCTURES AND MORES:**

*Identify potential disruption of native or traditional lifestyles or communities.*

There are no native, unique or traditional lifestyles or communities in the vicinity that would be impacted by the proposal.

---

**23. CULTURAL UNIQUENESS AND DIVERSITY:**

*How would the action affect any unique quality of the area?*

The State Trust land in this proposal is currently managed for grazing. The State land is generally indistinguishable from the adjacent private lands, with no unique quality.

The potential sale of the state land would not directly or cumulatively impact cultural uniqueness or diversity. It is unknown what management activities would take place on the land if ownership was transferred. The tract was nominated by the lessee with the intent of purchasing and continuing use as grazing.

---

**24. OTHER APPROPRIATE SOCIAL AND ECONOMIC CIRCUMSTANCES:**

*Estimate the return to the trust. Include appropriate economic analysis. Identify potential future uses for the analysis area other than existing management. Identify cumulative economic and social effects likely to occur as a result of the proposed action.*

Legal	Acres	2019 Lease Income	Income per acre
Section 15, T35N, R5E	40.00	\$157.20	\$3.93

The statewide stocking rate for grazing land on 4.1 million acres averages 0.24 AUMs per acre or a total of 966,000 AUMs (2018 DNRC Annual Report). 2018 statewide grazing land gross revenue was \$11,430,000 or (\$11.83 per AUM) on 4.1 million grazing acres for an average income of \$2.79 per acre. The tract nominated for sale is higher than the average statewide stocking rate at 0.300 AUMs/acre. The tract has a higher than average statewide income for grazing land at \$3.93/acre. The tract proposed to sell is small and isolated which creates management problems for the state and is generally not efficient to administer. In addition, this tract is essential for Meissner Ranches Inc.'s ranching business.

From 2006-2018, 1,065.00 acres in Liberty County have been sold through the land banking process. This resulted in a total sale value of \$246,473.00 or \$231.43 per acre in Liberty County.

An appraisal of the property value has not been completed to date. Under DNRC rules, an appraisal would be conducted if preliminary approval to proceed is granted by the Board of Land Commissioners. The Department is conducting more detailed evaluations currently to decide on whether to offer the tracts for sale. The revenue generated from the sale of these parcels would be combined with other revenue in the Land Banking Account to purchase replacement property for the benefit of the Trust. It is anticipated the replacement property would have legal access and be adjacent to other Trust lands which would provide greater management opportunities and income. If replacement property was not purchased prior to the expiration of the statute, the revenue would be deposited into the permanent trust for investment.

No public comments were received from the extensive scoping list, published public notice, or the public at large.

<b>EA Checklist Prepared By:</b>	<b>Name:</b> Tony Nickol <b>Title:</b> Land Use Specialist, Conrad Unit, Central Land Office <b>Date:</b> May 9, 2019
--------------------------------------	---

## V. FINDING

### 25. ALTERNATIVE SELECTED:

Alternative B (the Proposed action) – Under this alternative, the Department would request and recommend approval by the Land Board to sell the 40.00 acres of state land currently held in trust for the benefit of Common Schools. If approved by the Board, the sale would be at public auction, subject to the requirements found in Title 77, Chapter 2, Part 3 of the Montana Codes Annotated. The income from the sale would be pooled with other land sale receipts from across the State to fund the purchase of other state land, easements, or improvements for the beneficiaries of the respective trusts.

### 26. SIGNIFICANCE OF POTENTIAL IMPACTS:

I will see you Monday morning at the office at 7:30

### 27. NEED FOR FURTHER ENVIRONMENTAL ANALYSIS:

☐


EIS

☐

More Detailed EA

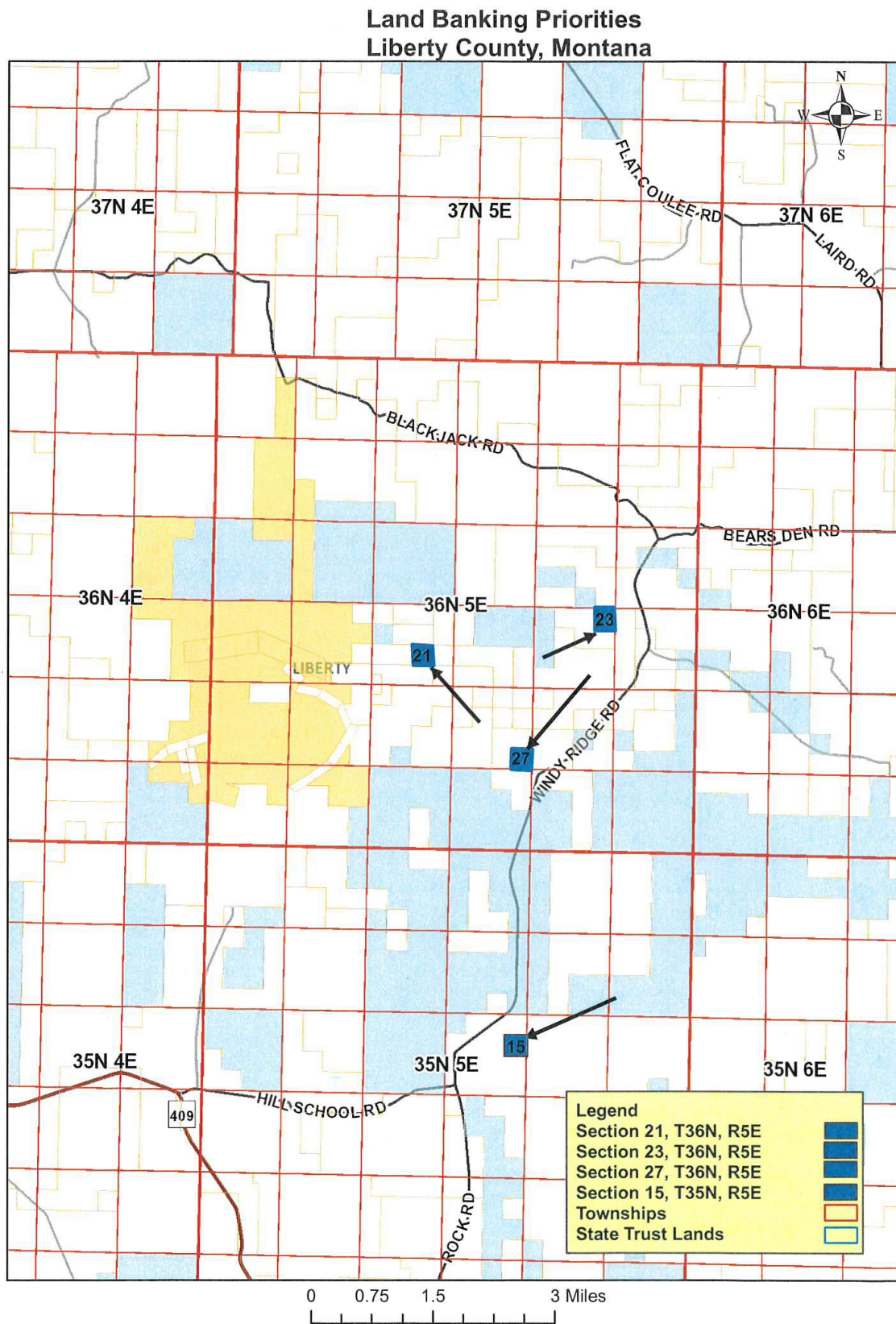
☒

No Further Analysis

<b>EA Checklist Approved By:</b>	<b>Name:</b> Erik Eneboe
	<b>Title:</b> Conrad Unit Manager, Central Land Office
<b>Signature:</b> 	
<b>Date:</b> May 13, 2019	

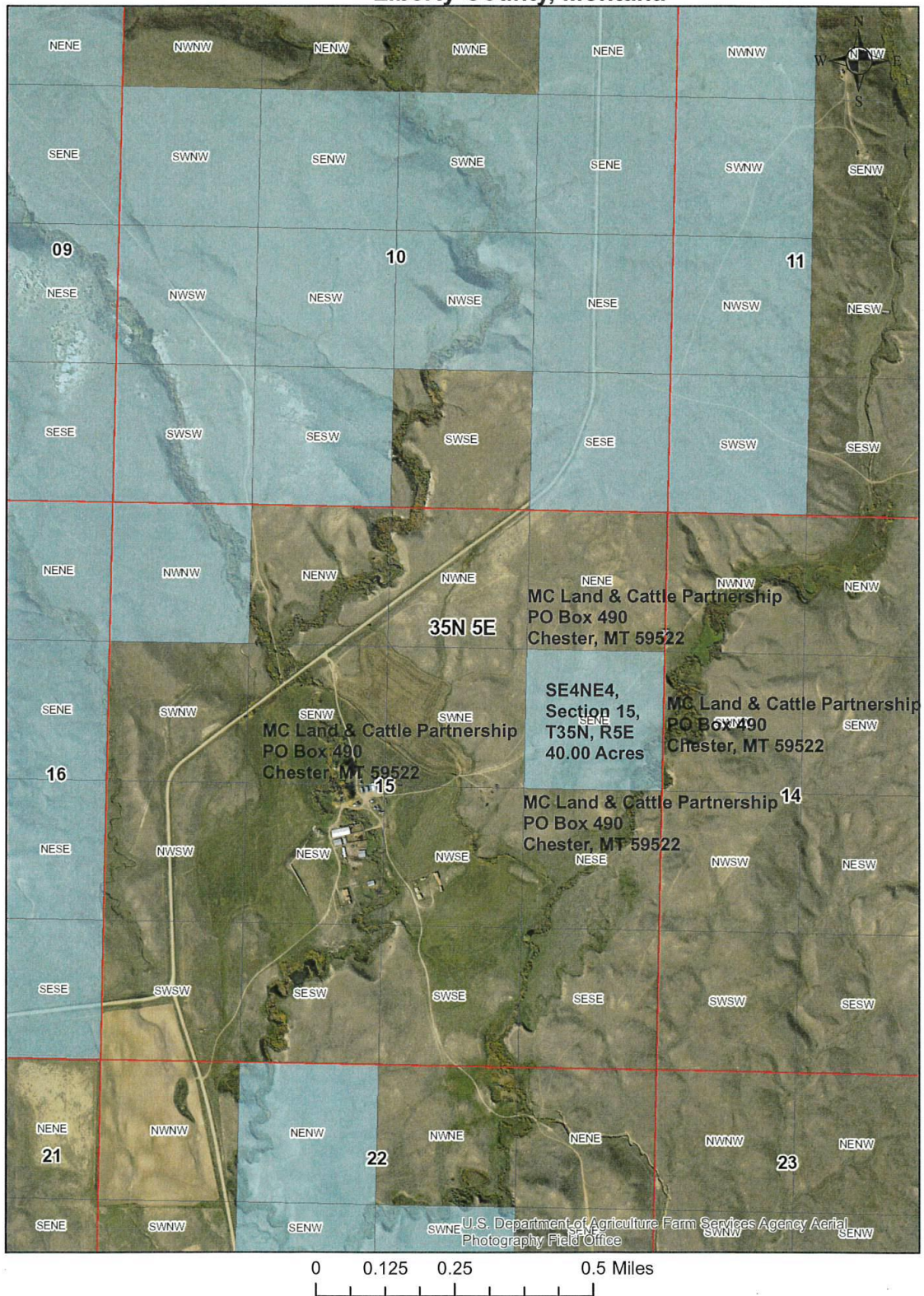


“Appendix A”





## Appendix B Liberty County, Montana



## “Appendix C”

<p>Montana Environmental Info. Center Attn: Anne Hedges PO Box 1184 Helena, MT 59624</p>	<p>Matador Cattle Company Attn: Kyle Hardin 9500 Blacktail Road Dillon, MT 59725</p>	<p>Dept. of Fish, Wildlife, and Parks Attn: Darlene Edge PO Box 200701 Helena, MT 59620-0701</p>
<p>MC Land &amp; Cattle Partnership PO Box 490 Chester, MT 59522</p>	<p>University of Montana Attn: Rosi Keller 32 Campus Drive Missoula, MT 59812-0001</p>	<p>Dept. of Environmental Quality Attn: Bonnie Lovelace PO Box 200901 Helena, MT 59620-0901</p>
<p>Montana School Boards Association Attn: Bob Vogel 863 Great Northern Blvd. Ste 301 Helena, MT 59601-3398</p>	<p>Office of Public Instruction Attn: Elsie Arntzen, Superintendent Box 202501 Helena, MT 59620-2501</p>	<p>Dept. of Transportation Attn: Carla Haas PO Box 201001 Helena, MT 59620-1001</p>
<p>Montana Grain Growers Association Attn: Lola Raska PO Box 1165 Great Falls, MT 59403</p>	<p>School for Deaf and Blind Attn: Donna Sorensen, Superintendent 3911 Central Avenue Great Falls, MT 59405</p>	<p>Teton County Commissioners PO Box 610 Choteau, MT 59422</p>
<p>Montana Wood Products Attn: Julia Altermus PO Box 1967 Missoula, MT 59806</p>	<p>Montana Tech Attn: Don Blacketter, Chancellor 1300 W Park Street Butte, MT 59701</p>	<p>Liberty County Commissioners PO Box 459 Chester, MT 59522</p>
<p>Montana Association of Counties Attn: Harold Blattie 2715 Skyway Dr. Helena, MT 59601</p>	<p>University of Montana-Western Attn: Charles Raffey, Chancellor 710 South Atlantic Dillon, MT 59725</p>	<p>House District 18 Llew Jones 1102 4<sup>th</sup> Ave SW Conrad, MT 59425</p>
<p>Jack Atcheson, Sr. 3210 Ottawa Butte, MT 59701</p>	<p>Montana State University-Billings Attn: Dr. Ron Larsen, Chancellor 1500 N 30<sup>th</sup> Street Billings, MT 59101</p>	<p>Senate District 9 Bruce Gillespie PO Box 275 Ethridge, MT 59435</p>
<p>Montana Audubon Attn: Janet Ellis PO Box 595 Helena, MT 59624</p>	<p>Office of Budget and Program Planning Attn: Budget Director PO Box 200802 Helena, MT 59620-0802</p>	<p>House District 17 Ross Fitzgerald 451 1<sup>st</sup> Road NE Fairfield, MT 59436</p>
<p>MSU Bozeman Attn: Kellie Peterson, Legal Counsel PO Box 172440 Bozeman, MT 59717-0001</p>	<p>Veterans' Home Trust Beneficiary Attn: Sheila Hogan, Director DPHHS PO Box 4210 Helena, MT 59620-4210</p>	<p>House District 27 Joshua Kassmier PO Box 876 Fort Benton, MT 59442</p>
<p>MT Farm Bureau Federation Attn: Jake Cummins 502 19<sup>th</sup>, Suite 104 Bozeman, MT 59718</p>	<p>Department of Corrections Attn: Loraine Wodnik, Interim Director PO Box 201301 Helena, MT 59620-1301</p>	<p>Senate District 14 Russel Tempel 1839 1200 Road South Chester, MT 59522</p>

Cory Hawks 53 Oilmont Road Galata, MT 59444	Montana Association of Land Trust Attn: Glen Marx, Executive Director PO Box 892 Helena, MT 59624	Birch Creek Colony Inc. 900 Birch Creek Colony Road Valier, MT 59486
George Wardell & Donald Sieler 112 Valley View Drive Great Falls, MT 59404	The Blackfeet Nation Attn: John Murray, THPO Quarter 108, East Gov. Square Box 2809 Browning, MT 59417	Donald Reishus PO Box 61 Valier, MT 59486
Adrian Hawks 55 Oilmont Road Galata, MT 59444	Chippewa Cree Tribe of Rocky Boy's Reservation Attn: Alvin Windy Boy, THPO RR 1 #544 Box Elder, MT 59521	Fred & Gayle Stout 10635 Mullan Road Missoula, MT 59808
Donald Sieler PO Box 479 St. Maries, ID 83861	Confederated Salish and Kootenai Tribes of the Flathead Reservation Attn: Francis Auld and/or Ira Matt, THPO PO Box 278 Pablo, MT 59855	Anna Gail Sabados & John Willis C/O Daniel Jones 403 South Delaware Street Conrad, MT 59425
Dept. of Fish, Wildlife, and Parks Attn: Brent Lonner PO Box 488 Fairfield, MT 59436	The Crow Tribe of Indians Attn: Hubert Two Leggins, THPO PO Box 159 Crow Agency, MT 59022	Deep Creek Grazing Association 1381 Airport Road Choteau, MT 59422
Dept. of Fish, Wildlife, and Parks Attn: Ryan Rauscher 514 Front Street Conrad, MT 59425	Hawks Angus Inc. 55 Oilmont Road Galata, MT 59444	Heirmosa Ranch LLC PO Box 161 Dupuyer, MT 59432
Daniel Berube 27 Cedar Lake Drive Butte, MT 59701	Mc Dowell Ranches Inc. PO Box 113 Chester, MT 59522	BOONE & CROCKETT CLUB FOUNDATION INC C/O TONY SCHOONEN 250 STATION DR MISSOULA, MT 59801
The Nature Conservancy 32 South Ewing Helena, MT 59601	Gerald Lear 160 5 <sup>th</sup> Road NW Choteau, MT 59422	BOONE & CROCKETT CLUB FOUNDATION INC 388 UPPER TRM RANCH ROAD DUPUYER, MT 59486
Montana Stockgrowers 420 N California Helena, MT 59601	John P. Paul 4295 MT Highway #200 Wolf Creek, MT 59648	Glacier Colony Inc. PO Box 2209 Cut Bank, MT 59427
Montana Wildlife Federation Attn: Craig Sharpe and Larry Copenhaver PO Box 1175 Helena, MT 59624	Barr & Colleen Gustafson PO Box 568 Browning, MT 59417	Windmere Inc. PO Box 1807 Great Falls, MT 59403

T & C Alme Inc. 857 Oilmont Highway Oilmont, MT 59466	Diamond 4D LLC PO Box857 Choteau, MT 59422	
Anna Mae Woldtvedt Trustee 656 Oilfield Avenue Shelby, MT 59474	Mt – FWP Ryan Rauscher 514 S Front St Suite C Conrad, MT 59425	
Daniel Roark 1434 Benjamin Road Oilmont, MT 59466		
DEPT. OF FISH, WILDLIFE, & PARKS C/O GARY BERTELOTI 4600 GIANT SPRINGS ROAD GREAT FALLS, MT 59405		
Pondera County Commissioners 20 Fourth Avenue SW Conrad, MT 59425		
Toole County Commissioners 226 First Street South Shelby MT, 59474		
Beth Weatherby, Chancellor University of Montana Western 710 Atlantic Dillon, MT 59101		
Dr. Mark Nook, Chancellor Montana State University Billings 1500 N 30 <sup>th</sup> Street Billings, MT 59101		
Meissner Ranches Inc. PO Box 486 Chester, MT 59522		

Appendix D  
Public Comments