

FOR SALE at PUBLIC AUCTION

WHITEFISH RAILWAY DISTRICT IN FLATHEAD COUNTY

Sale No.
1048

Commercial Townhouse 140 Lupfer Avenue Whitefish, Montana

Public Auction:
1:00 pm Wednesday,
July 17, 2019
DNRC Northwest Land
Office, 655 Timberwolf
Parkway, Suite 1,
Kalispell, MT

The State of Montana is
auctioning this commercial
townhouse located in
Flathead County.

Minimum Bid:
\$290,000.

20% Bid Deposit
Required by June 27, 2019
For more information on
State Trust Land go to [http://
dnrc.mt.gov/divisions/trust/
real-estate/land-banking/state-
lands-for-sale](http://dnrc.mt.gov/divisions/trust/real-estate/land-banking/state-lands-for-sale)



MONTANA DNRC

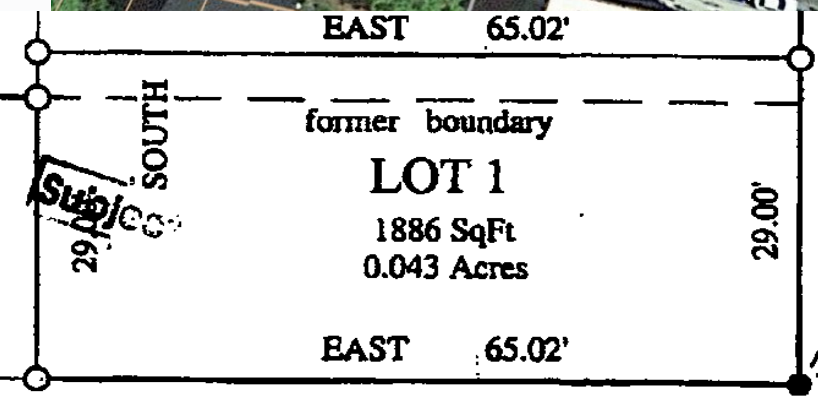
Mark Harvel
Real Estate Management Bureau
1539 11th Avenue
PO Box 201601

Phone: 406-444-1445
E-mail: mharvel@mt.gov



This two level 1315± square foot commercial townhouse is located on a paved city street with .043± deeded acres and previously leased as retail space. Amenities include: rough sawn wood floors, central air and restroom located on each level. Built in 2005, this frame built structure is located on Lot # 1 of a three lot Townhouse Association. Lot dimensions are approximately 29' x 65" and is a level site at street grade. Utility services include gas, electric, water, sewer with trash pick up. Public street parking is on Lupfer Ave with no off-street parking on site.

Land Banking Sale #1048



Centrally located at 140 Lupfer Ave just off E 2nd Street in Whitefish. Just over a mile to Whitefish Lake & within two blocks of Hwy 93 and Hwy 487.

Legal description: Lot One (1) of Lupfer Townhouses, T31N-R22W Section 36, Flathead County, Montana

For more information contact:

Mark Harvel, DNRC Helena office (406) 444-1445 or
Anne Moran, DNRC Kalispell office (406) 751-2274.

****To participate in the auction you must be registered and have deposited the minimum 20% bid amount not later than twenty (20) days before the date of the auction.****

