

FOR SALE at PUBLIC AUCTION

BYNUM AREA PROPERTY IN TETON COUNTY

Sale No.
1046

Auction
May 1, 2019
1:00 p.m.
Teton County
Courthouse in
Choteau, MT

Minimum bid on land:
\$26,000.00

Deposit of \$5,200.00 must
be received by the DNRC by
April 11, 2019

The State of Montana is auctioning
this trust land located in Teton Coun-
ty. Improvements must be purchased
from the owner separately.

For more information on State Trust
Land Banking Sales go to [http://
dnrc.mt.gov/divisions/trust/real-
estate/land-banking](http://dnrc.mt.gov/divisions/trust/real-estate/land-banking)

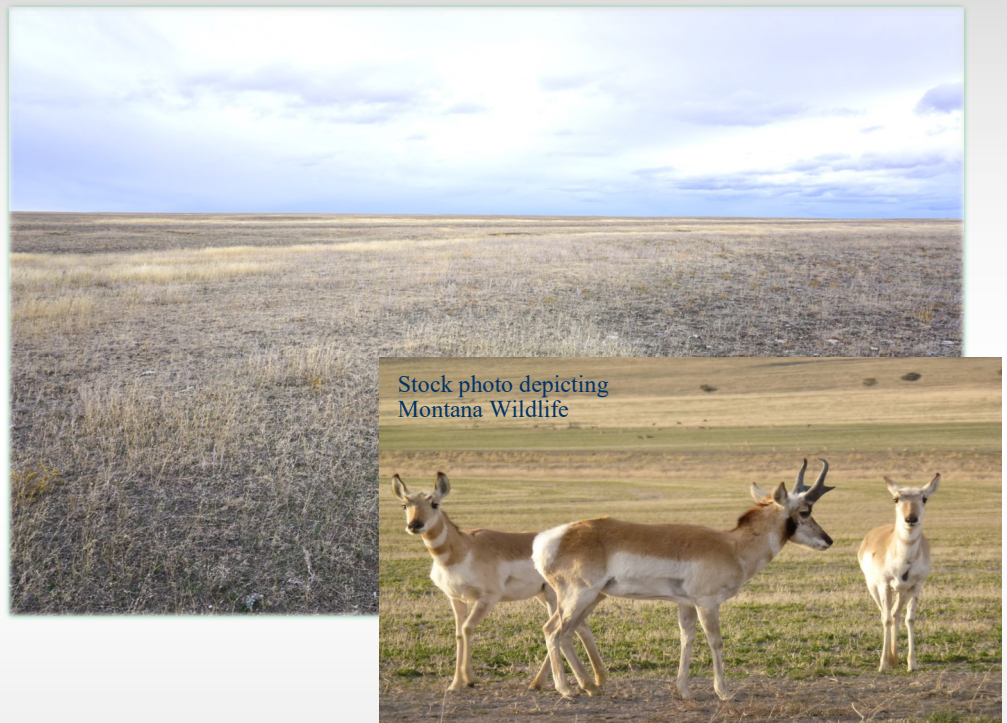


MONTANA DNRC

Mark Harvel
Real Estate Management Bureau
1539 11th Avenue
PO Box 201601
Helena, MT 59620-1601

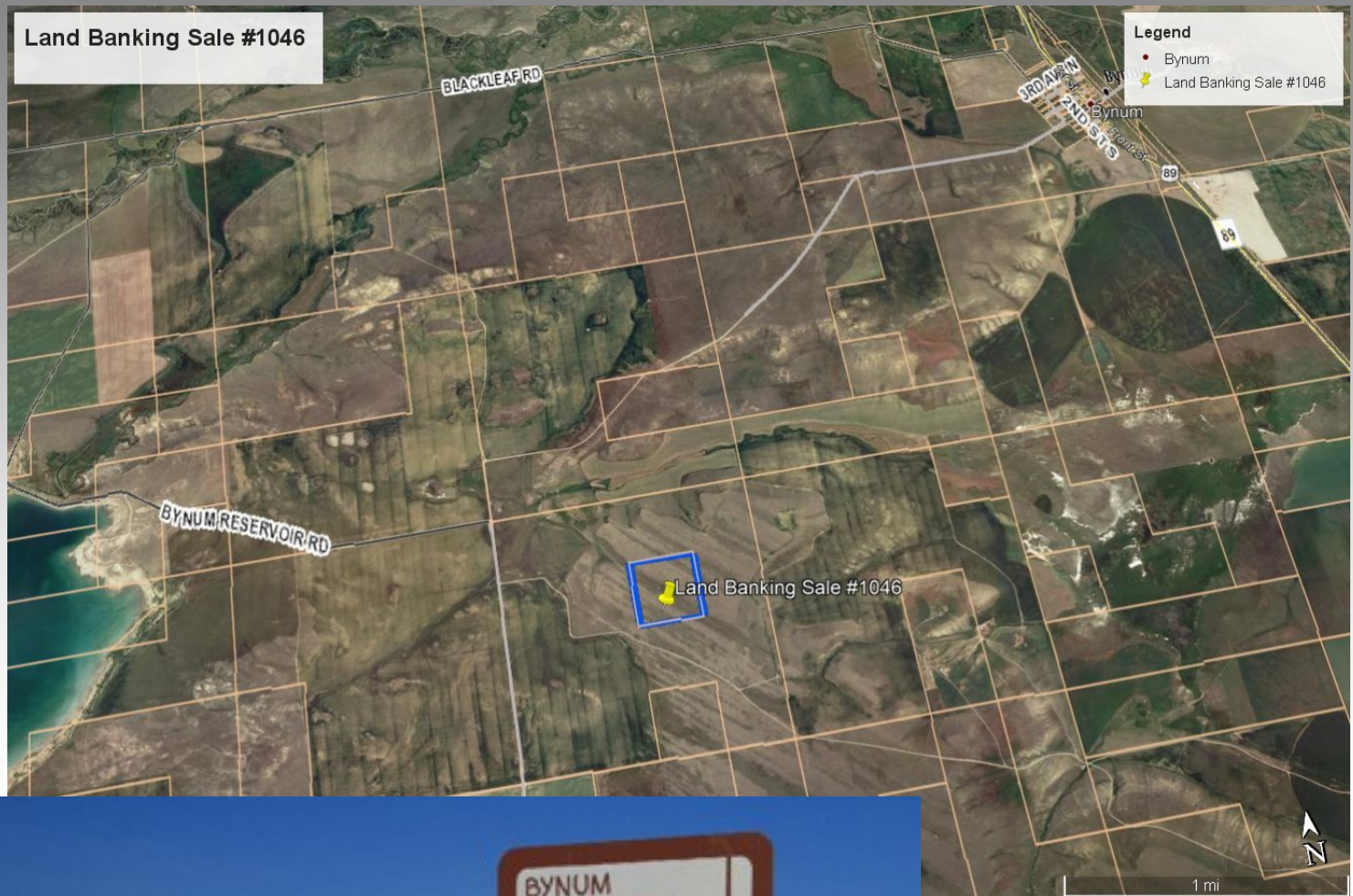
Phone: 406-444-1445
E-mail: mharvel@mt.gov

Montana Prairie Lands 40± Ag/Grazing Lands Southwest of Bynum, Montana



Forty± deeded acres currently leased and utilized as grazing land. The topography is level to rolling and composed of native rangeland. Northern Mixed Grassed Prairie are typical of grazing land in this area. Provides habitat for a variety of big game including mule deer, whitetail deer and pronghorn antelope as well upland game birds; including Sharp Tail grouse and Hungarian partridge. Carrying capacity is estimated at 2 AUM's. This parcel is isolated with no record of legal access, utilities or water service.

Land Banking Sale #1046



Nearby Bynum Reservoir and Area of Scenic Montana Rocky Mountain Views

Located in the Heart of Teton County southwest of Bynum and North of Choteau, Montana. Teton County is 2,293 square miles in area.

The subject parcel is located approximately 4 miles southwest of the town of Bynum.

Legal description: SW4NE4, T25N-R06W, Section 3

****To participate in the auction you must be registered and have deposited the minimum 20% bid amount not later than 5:00 p.m. April 11, 2019 (twenty days before the date of the auction).****

